

press release

Increase of Productivity by Storage System from Systraplan

Systraplan, supplier of automatic storage systems, was instructed by Benchmark, a company in the USA, Lakewood, NJ, to build an automatic storage system for granite worktops. This storage system connects various machining equipment, i.e. saws, edge polishing and CNC machining, and thus the storage systems helps to increase the economic efficiency of the whole factory.

This is already the third project of this kind. First storage systems were successfully implemented at Arte diGranito, Netherlands, a few years ago. This year another system was put into operation at Cunningham Stone Ltd. in Northern Ireland.

Knowledge and skill gained through many years have given proof that this storage system, which provides the machining elements with material, is extremely reasonable and effective when it comes to the production of granite worktops.

Specific Internal Transport

This storage system enables a flexible placing of slabs as well as already machined worktops placed to and released from stock. Processed boards are placed into stock between the single machining intervals and are then released from stock newly arranged in groups.

Due to the target-orientated internal transport and newly arranged material groups in accordance to the production steps to follow, an extremely high working load of the machining units, operating in multiple shifts, is gained, which results in a very high productivity.

By combining parts which are to be machined by similar production steps, set-up times can be minimised and the operational capacity can be increased.

Advantages of Systraplan-Storage system:

- High capacity in spite of less floor space
- Absolute encoder in all measuring systems
- Servo drives require no main brakes (minimisation of mechanical wear)
- Direct access on every single granite slab

- Carefully transport of the granite slabs (no damages of the surfaces)
- Saving of energy due to servos with regenerative power supply units
- Flexible system; extension of the rack-system very easily to realise

Storage and Control Program

With the Systraplan storage system comes the 3Tec storage and control program, which can be operated under the Microsoft operating system Windows NT® / Windows 2000 / XP. The program code was generated with the 32-bit Delphi development kit.

This guarantees that today's and tomorrow's requirements will be met also in future in respect of system design, flexibility and links to standard systems and standard software.

Full-Service Fabricator

Benchmark is a full-service fabricator and installer of premium kitchen and bath countertops, tub- and shower-surrounds, architectural surfaces and tabletops for residential and commercial applications.

The products are primarily made of Corian® Solid Surfaces, Granite, Marble and Zodiaq® Quartz Surfaces. Upon request, Benchmark also can fabricate and install surfacing projects from other brands of solid surface or engineered stone.

SYSTRAPLAN Gesellschaft für

Planung und Bau von materialfluß- technischen Anlagen mbH & Co. KG

Einsteinstraße 5 , **D-32052 Herford**

Telefon +49 (0) 5221 / 76 77 – 0 , Telefax +49 (0) 5221 / 76 77 77

www.systraplan.de

press release

State-of-the-art Processes in Production

Benchmark maintains two manufacturing facilities in Central New Jersey a solid surface fabrication shop in Lakewood and a granite plant in Howell.

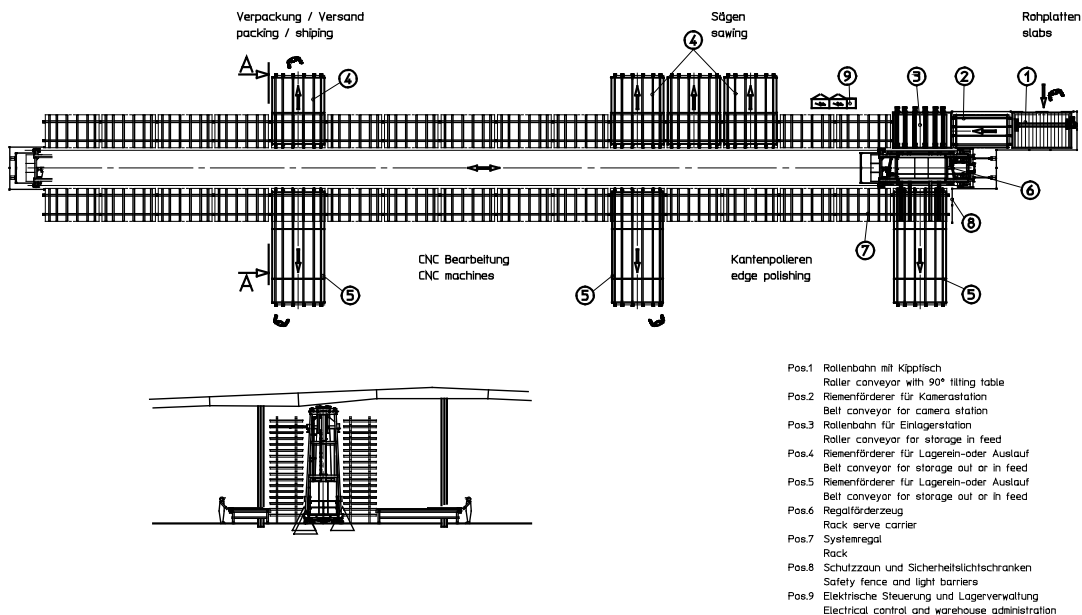
Both facilities serve customers in the Mid Atlantic Region of New Jersey, New York and Pennsylvania, plus Delaware and Virginia. The strength of the company comes from its 90 employees, their shared strategic vision and dedication to total customer satisfaction.

Quality, Innovation and Customer Care

Combining experience that spans three decades with state-of-the art technology and precision craftsmanship, Benchmark continues to set the standard for quality, innovation and customer care in the solid surface and stone surfacing industry.

With the new automatic storage and retrieval system from Systraplan, Benchmark will stay ahead of the curve in the surfacing industry. By reinvesting in technological improvements and engaging state-of-the-art processes in production is it possible to offer quality products at an affordable price.

3424



SYSTRAPLAN Gesellschaft für

Planung und Bau von materialfluß- technischen Anlagen mbH & Co. KG

Einsteinstraße 5 , D-32052 Herford

Telefon +49 (0) 5221 / 76 77 – 0 , Telefax +49 (0) 5221 / 76 77 77

www.systraplan.de

press release



SYSTRAPLAN Gesellschaft für
Planung und Bau von materialfluß- technischen Anlagen mbH & Co. KG
Einsteinstraße 5 , **D-32052 Herford**
Telefon +49 (0) 5221 / 76 77 – 0 , Telefax +49 (0) 5221 / 76 77 77
www.systraplan.de